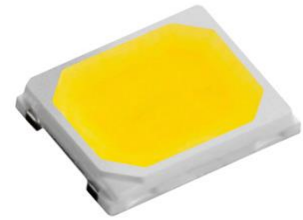




Datasheet No.138 SMD LED KLSL2835W 6V 1W 150mA

Features

- Popular 2835W Package with Thermal pad
- Wide Viewing angle
- Suitable for Reflow Solder Process & SMT Assembly
- Available on Tape and Reel
- RoHS compliant (RoHS)

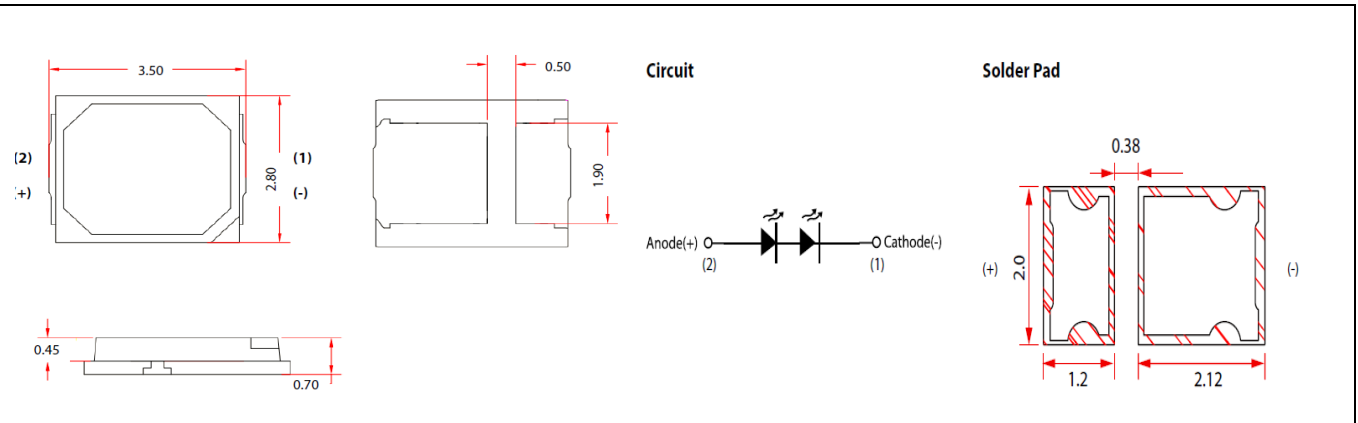


Description:

The LEDchip Indus LED-KLSL2835W 6V 1W is ideal for all lighting applications This package has high efficiency, low power consumption, wide viewing angle and ideal power factor.

Applications

- Indore & outdoor Lighting
- Entertainment & Decorative Lighting



Luminous Flux Characteristic IF = 150mA and TJ =25 °C

Lumens bin	Min. Luminous flux (Lm)	Max. Luminous flux (Lm)	Forward Current (mA)	CRI
110-120	110	120	150mA	80
120-130	120	130		80
130-140	130	140		70

Note:

- The Luminous Flux performance is guaranteed with in prescribed operating conditions
- LEDchip Indus Pvt Ltd maintains the following tolerances $\pm 11\%$ on Flux, $\pm 2\%$ for CRI.

Correlated Color Temperature (CCT)

White	Warm White	Natural White
W1 5700-6000K	T1 2700-2900K	S1 3700-3900K
W2 6000-6500K	T2 2900-3000K	S2 3900-4000K
W3 6500-7000K	T3 3000-3300K	S3 4000-4300K

Voltage Bin Structure

Group	Min.Voltage (V)	Max. Voltage (V)
V1	5.8	5.8-6.0
V2	6.0	6.0-6.2
V3	6.2	6.4-6.6

Characteristics at 150mA Test Current

Parameter	Symbol	Value	Units
Viewing Angle (TYP)	$2\Theta_{1/2}$	120	Degree
Thermal resistance	-Rt	10	°C/W
CRI	Ra	>80	-
Lumens *	Φ_v	110-120-130-140	Lumens
Color Correlated Temperature CCT *	CCT	2700-6500	K

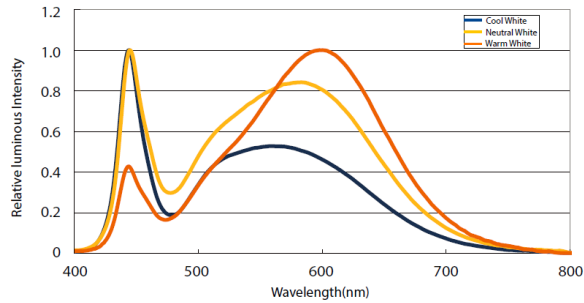
* -please specify your range value for I_v & CCT

Absolute Maximum Ratings (Ta=25°C)

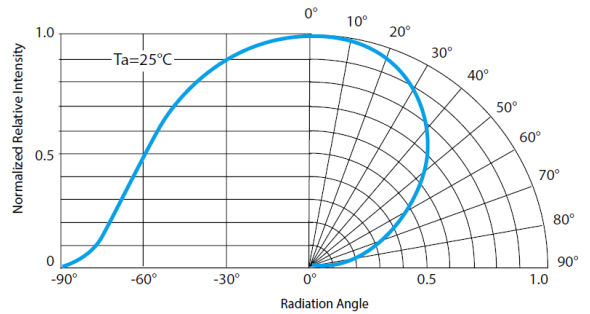
Parameter	Symbol	Value	Units
Forward Current	I_F	200	mA
Pulse Forward Current	I_{pulse}	350	mA
Reverse Current	I_R	10	μA
Reverse Voltage	V_R	5	V
Operating temperature	-	-40~+85	°C
Storage Temperature	-	-40~+125	°C
LED Junction Temperature	T_j	125	°C
ESD Sensitivity (HBM)	V_B	2000	V
Soldering temperature	T_s	Reflow Soldering : 255~260°C/10~30sec Manual Soldering : 350 °C/3sec	

Characteristic Curves

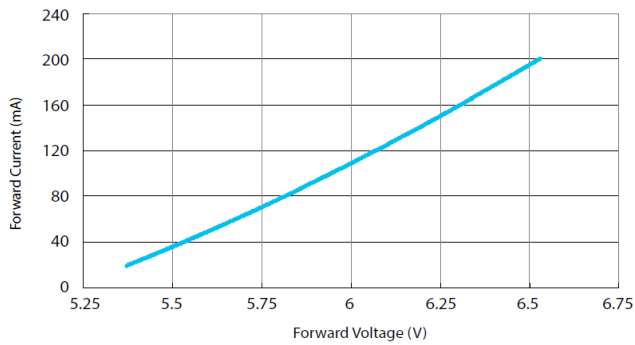
Color Spectrum (80CRI)



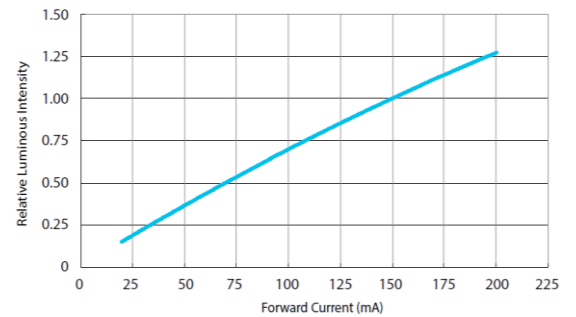
Beam Pattern



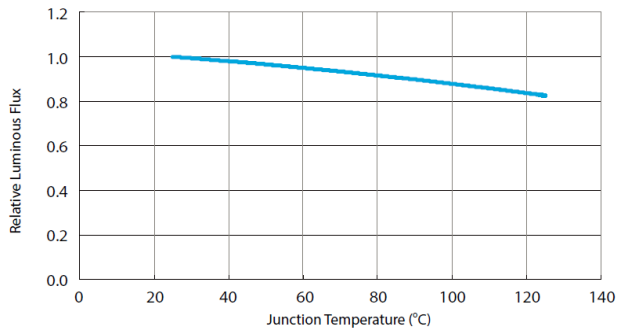
Forward Current vs. Forward Voltage



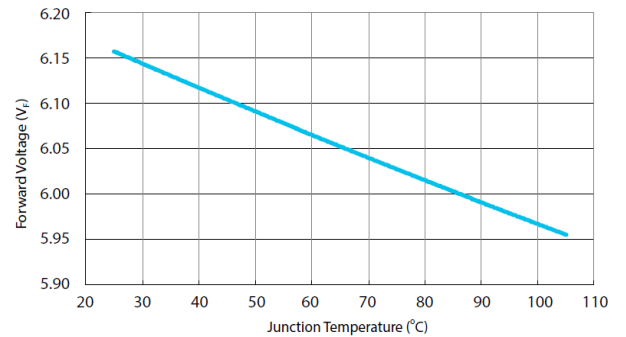
Relative Luminous Intensity vs. Forward Current



Relative Luminous Flux vs. junction Temperature



Forward Voltage vs. Junction Temperature



LEDCHIP INDUS PRIVATE LIMITED

29A&B Electronics Complex, Kushaiguda Hyderabad 500 062 Ph 91-40-27123555

kwalitypolywa@gmail.com, sales@kwalitiyindia.com www.LEDchipIndus.com

